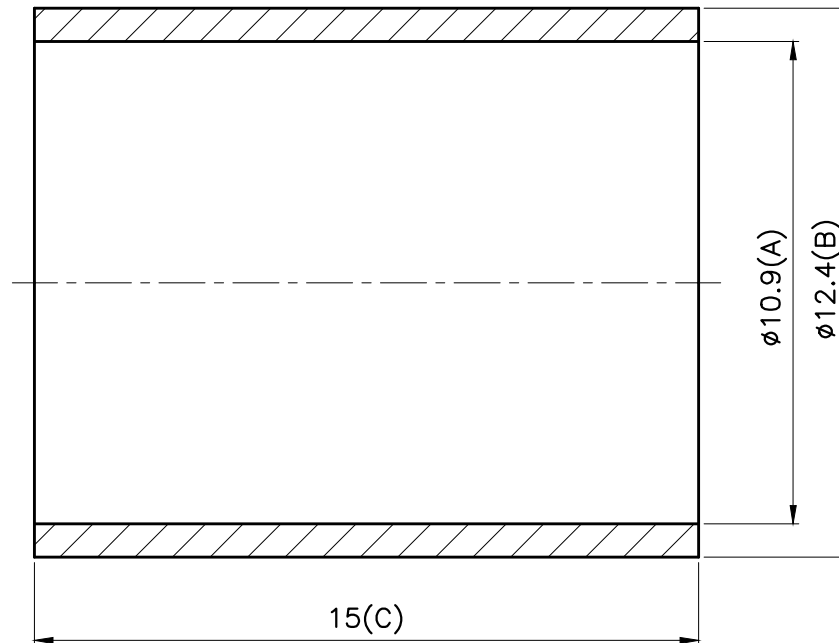


REVISIONS	
ISS	DESCRIPTION\DATE
	09/25/09"

RoHS COMPLIANT



CONNECTORS CABLES



SPECIALISTS LTD.

APRD:	UNLESS OTHERWISE SPECIFIED TOLERANCES 0.5-6 = ± 0.1 >6-30 = ± 0.2 >30-120 = ± 0.3 >120-315 = ± 0.5 >315-1000 = ± 0.8 ANGLES = $\pm 3'$	SCALE: 6/1	TITLE: 銅圈10.9*12.4*15/ 銅鍍鎳
CHKD:		UNIT: mm	(BRASS/ NICKEL PLATED)
DR:			PART NO: RG213SLEEVE
		SHEET: .	DRAWING NO: 04-1090